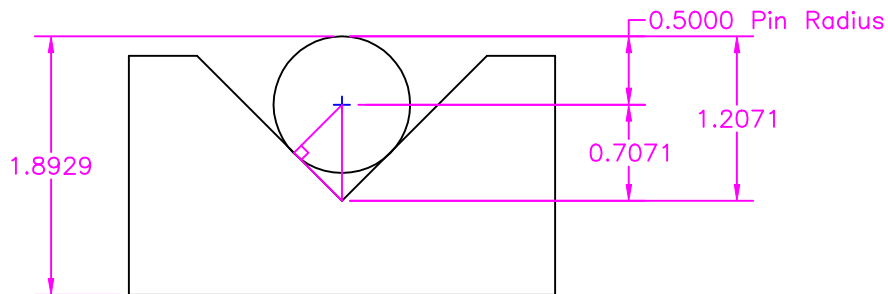


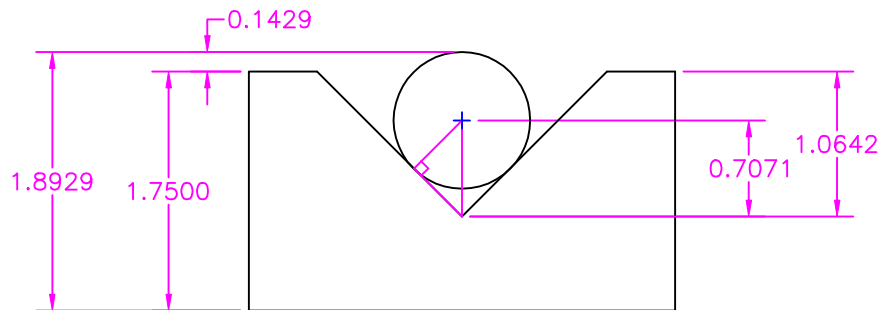
## Pin Nested in Vee Instructions

3-25-01 Nested Pin Instructions pg3.DWG

5. Now you can do addition and subtraction to find the distance from the point to the bottom.  
 Sample problem:  $1.8929 - 0.500 - 0.7071 = 0.6858$



6. You can find the Depth of the Vee with addition and subtraction.  
 Sample problem:  $1.8929 - 1.7500 = 0.1429$  pin out of block  
 $1.2071 - 0.1429 = 1.0642$  Vee depth to theoretical sharp point



7. Calculate the top side of the triangle.  
 this length is half of the top of the vee width to sharp points.  
 Sample problem:  $1.0642 \times \tan 45 = 1.0642$

